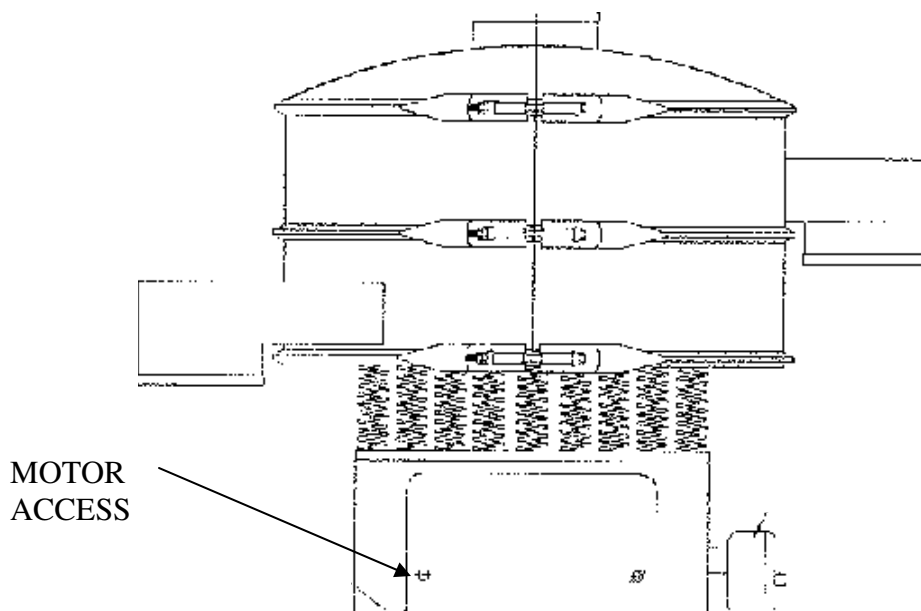
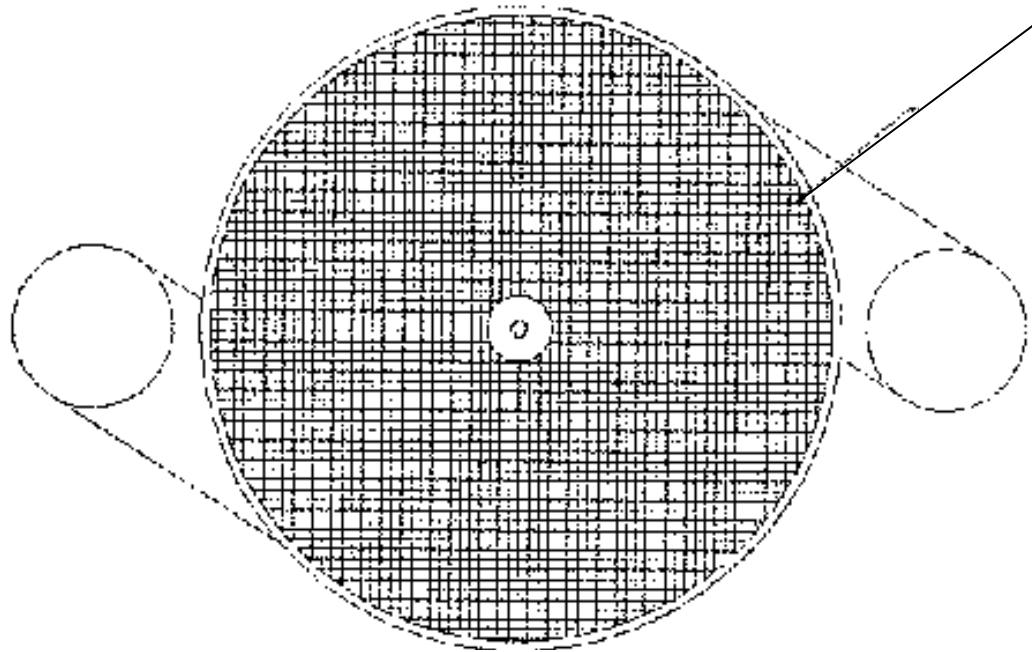




SMICO CIRCULAR SCREENER MANUAL

PLAIN VIEW SHOWN WITH
TOP COVER REMOVED



OPERATING & MAINTENANCE MANUAL
24" TO 60" CIRCULAR SCREENER

TABLE OF CONTENTS

Installation, Operation & Maintenance -----	Pages 1-6
Lead Angle Settings -----	D w g S 5 8 0
Vibration Indicator -----	Dwg SKA582
Top/Bottom Motor Weight Assembly -----	D w g S 5 8 3
Center Tensioning Assembly & Diffuser Arrangement -----	Dwg SKA593
Motor Lead Hook-Up -----	Dwg EA1469
Screener Outline Dimensions -----	Dwg SKI 83
Spare Parts List	
BALDOR Service Policy & Authorized Service Centers	

24"- 60" CIRCULAR Screener

Operation Maintenance

Introduction

SMICO's CIRCULAR screener can meet the critical screening requirements of virtually every processing industry. Ideally suited for dry separation, wet or dry classification or liquid-solids separation, this "State of the Art" screening equipment will meet your high volume screening specifications efficiently, reliably, and economically.

The **CIRCULAR** screener is a vibrating circulator screen separator. Vibration is caused by a screen-mounted electric motor with rotating upper and lower eccentrically weighted arms. The upper arm causes a screen horizontal motion, which is necessary to move screened material to the outside frame. The lower arm produces a vertical and tangential movement, which accelerates the movement of filtered liquid or undersized product through the screen. The angular distance between the arms plus the number of weights used can be varied for maximum screening efficiency of any screenable product - wet or dry - heavy or light - coarse or fine - hot or cold.

The **CIRCULAR** screener is used in many industries including laundries, foods, chemicals, metallic and non-metallic minerals, pharmaceutical, abrasives, ceramics, plastics and others. It is also ideally suited for high volume de-watering operations like waste water treatment and product recovery from liquid streams.

Installation & Operation Drawings

Please review the drawings in the back of this manual before commencing installation. The information contained is necessary to properly install **SMICO** supplied equipment to insure a successful project.

SMICO's CIRCULAR screener is shipped completely assembled and factory tested. For protection during shipping, the vibrating assembly is secured to the base with shipping brackets. **REMOVE ALL YELLOW SHIPPING BRACKETS BEFORE CONNECTING ELECTRICAL POWER TO THE UNIT.** Check that the locknuts on the screen center post and all clamp rings are tight. Check that the rubber spring bushings are expanded inside the springs. Before starting the motor, push the upper assembly to make sure it is vibrating freely on its springs.

Operation and Adjustment

Starting and stopping of the **CIRCULAR** screener can be by an on/off switch or it can be operated completely automatic. During the first hours of the systems operation, adjustments to the **CIRCULAR** screener *may* improve its efficiency of solids removal. The objective is to speed the solid material to the outside of the screen and then discharge it to the waste barrel with the least necessary amount of vibration, so as to prolong screen life and decrease motor wear.

Vibration Indicator

While the unit is running, the amount of vertical and horizontal vibration (measured in fractions of an inch) can be read from the vibration indicator sticker located on the outside of the lower screen frame. The vibration indicator sticker shows how the readings are made. (See drawing). A target setting of about 1/8" to 1/4" in both planes is desirable, providing it does the job.

Lead Angle

The vibration is created by eccentric weights attached to the top and bottom of the motor shaft. The bottom weight can be positioned to lead the top weight by an amount known as the lead angle. Changing the lead angle can vary the characteristics and effectiveness of the screening action (Refer to the **SMICO** drawing for graphic information). The **SMICO CIRCULAR** screener is adjusted at the factory with a lead angle of 70 degrees. Some fine-tuning may be necessary on a new installation. Improved movement of wet screened solids to the outside frame can in many cases be improved by decreasing the lead angle to a lower setting. This should be done in 5 or 10 degree increments and generally, a setting of 30 or 35 degrees is the lowest effective setting. Adjustments to the lead angle can be accomplished as follows:

1. Turn the power off to the unit. NOTE: Any adjustments to the **CIRCULAR** screener should be made at a time when the main power to the control panel can be disconnected and locked.
2. Wait until the machine has completely stopped vibrating and remove motor access door.
3. Rotate motor shaft until degree indicator wheel is visible. Refer to drawing.
4. Loosen the safety set screw and the shaft clamping nut on the lower counterweight arm.
5. Rotate the lower counterweight arm until the slot in the weight aligns with the desired lead angle on the degree wheel.
6. Tighten the shaft clamping nut.
7. Tighten the safety set screw.
8. Replace the access door.

Adding/Deleting Weights

Changing the number of bottom weight plates will vary the vertical vibration movement, whereas the number of top weight plates affects the horizontal vibration movement. Units are usually shipped with two weights on the top eccentric arm and two weights on the bottom eccentric arm. This should provide good screening and also rotate any installed screen cleaning accessories, if equipped, at a reasonable rate in the correct direction. If unsatisfactory operation results and changing the lead angle does not provide a solution, add a single weight to the bottom eccentric arm. Proper operation may require some experimentation with adding or deleting weights from either arm and/or changing the lead angles. **CAUTION - DO NOT INSTALL MORE THAN FIVE (5) WEIGHTS ON EITHER ARM.**

If the material or the wiper assembly (if equipped) is not moving fast enough or in a clockwise direction, add a single weight to the upper counterweight arm.

Add or delete bottom weight plates in the following manner:

1. Turn the power off and lock the unit. (See NOTE in previous section).
2. Wait until the machine has completely stopped vibrating and remove motor access door.
3. Remove the nut and lock washer holding the weights in place and add or remove the desired number of weights.
4. Replace the lock washer and nut.
5. Replace motor access door.

Add or delete top weight plates in the following manner:

1. Turn the power off to the unit. (See NOTE in previous section).
2. Remove the lower clamp ring and tilt the entire screen frame assembly to provide access to the upper counterweight arm.
3. Remove the nut and lock washer holding the weight plates and add or delete the desired number.
4. Replace the lock washer and nut.
5. Replace the screen frame assembly and secure with the clamp ring. While tightening the clamp bolts, rap the clamp with a rubber mallet at several places around the circumference to insure a snug fit.

Discharge Spout Extensions

High vibration cycles of Shakers Screens require that only flexible and lightweight accessories be connected to the spouts.

Solids or liquids being discharged from the spouts may be directed to collection containers or pipes with lightweight flexible connectors or hose. CAUTION - heavy radiator type hoses or thick wall rubber tubes do not allow sufficient flexibility and are too heavy. Structural failure of the discharge spouts and/or the spacer frame can result from the above.

SMICO CIRCULAR SCREENER Maintenance

Motor Lubrication

NOTE: THE CIRCULAR SCREENER MOTOR MUST BE LUBRICATED AFTER EVERY 80-100 HOURS OF OPERATION OR EVERY MONTH, WHICHEVER COMES FIRST.

The lubrication procedure is as follows:

Note - the grease used in **SMICO** Baldor motors is Exxon Polyrex EM grease. It is critical that only this type of grease be used. Use only **SMICO** supplied or identical motor grease (Exxon Polyrex EM or equal).

1. Remove motor access door.
2. Wipe off any old grease and dirt from the grease fittings and grease gun nozzle.
3. Pump three to four strokes of grease into both the top and bottom grease fittings. **DO NOT OVER GREASE.**
4. Every 2000 hours or 6 months (whichever comes first) of operation remove the pressure relief fittings and pump in sufficient grease while turning the shaft by hand to completely replace the grease in the bearings. This can be determined when only new grease comes out of the relief fittings. Replace the relief fittings.

NOTE: Failure to comply with this lubrication schedule will void the warranty.

Motor Removal

1. Remove motor access door.
2. Disconnect motor wiring inside junction box.
3. Remove the cable connector inside the motor housing and pull cable through fitting.
4. Remove the lower clamp ring and tilt the entire screen frame assembly to provide access to the upper counterweight arm.
5. Remove the nut and lock washer holding the upper counterweight arm to the motor shaft and remove arm.
6. Remove the four nuts and washers on the upper motor flange to release motor from the table assembly. The bottom eccentric assembly can be removed with the motor.
7. Bring the motor through the access doorway flange first.

8. Motor Replacement

1. Motor is to be mounted with threaded end of motor shaft down.
2. Be sure that the motor mounting flange contact surface and the motor table contact surfaces are clean and rust free.
3. Position motor flange on four bolts extending from motor table. NOTE: Locate motor so that upper and lower grease fittings are accessible.
4. Route motor wire to junction box and fasten with cord strain relief. NOTE: Cord should have enough slack to allow motor to move freely without straining the cord. Cord should be positioned so as not to interfere with bottom eccentric weight on motor.

5. Torque the four bolts in a uniform pattern so as not to stress the motor to 130 foot-pounds. Make sure flange is properly seated all around and no gap exists between flange and table. Failure to insure proper seating before torquing will crack the flange.
6. Install the bottom eccentric weight, degree wheel with numbers upright. Then install the castle nut with cotter pin.
7. Install the top eccentric weight.
8. Refer to the previous pages for adjusting the number of weights and lead angle.
9. Check the motor mounting bolt torque the following day to insure proper torque.

Motor Repair

SMICO's CIRCULAR screener motors are custom fabricated by Baldor, and are specifically designed for the extreme loads of the eccentric arms and vibration. Baldor has set up exacting repair standards, which must be followed by their Service Centers. **SMICO** strongly recommends that only Baldor Service Centers be used for motor repair work even after any warranties expire.

Before attempting any repairs on the motor, it is recommended that you contact an Authorized Baldor Service Center. The name of your closest Baldor Distributor can be obtained from **SMICO** or your local yellow pages. **SMICO** must approve any motor service work, which is to be performed under warranty, before any expenses are incurred.

Claims of a defective motor under warranty must be rendered with an Authorized Baldor Service Center and **SMICO** before any service may be performed. Only authorized Baldor Service Centers may perform warranty work.

Screen Tensioning

Periodic inspection of the screen tension will lengthen screen life and maintain screening efficiency. Some units have a large washer and screen-tensioning nut installed in the center of the screen. Pre-tension the screen by screwing down the nut until three fingers can just about push the screen washer down from the nut. Tighten lock nuts securely.

Screen Removal

1. Remove center tensioning assembly, center washer and gasket from center post.
2. Remove upper clamp ring.
3. Lift off upper spacer frame.
4. Carefully lift screen over center post and remove from unit.

Screen Replacement

In order to limit down time, an *extra* screen and rim gasket should be kept on hand as a spare. When it becomes necessary to use the spare, a new screen should be ordered immediately. Installation procedure is as follows:

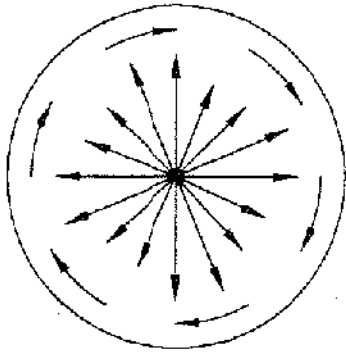
Remove old screen as described in the previous section.

- . Place the new gasket around the rim flange of the replacement screen.

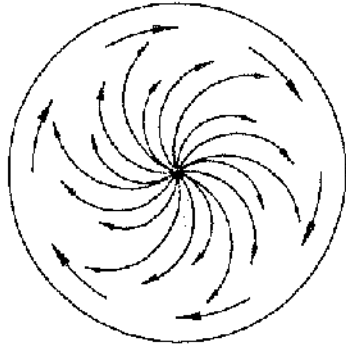
NOTE: REFER to CIRCULAR SCREENER Assembly Drawing for proper top and bottom of screen orientation. if screen is installed upside down, a high ledge will effectively prevent discharge of screened solids rendering the entire installation unusable.

2. Holding the screen parallel to the ground with the rim flange on the lower side, carefully guide the screen over the center post and set in place. Center outside rim on supporting flange. For screens larger than 30 inches in diameter, two workmen are recommended. Replace the upper spacer frame, centering the flange over screen rim and secure with a "V" clamp ring. While tightening the clamp bolts, rap the clamp with a rubber mallet at several places around the circumference to insure a snug fit.
3. Replace the center hold down hardware and tensioning assembly.
4. Some leakage may occur from "V" clamp area. Re-tighten clamps to eliminate leakage. Some re-seating with a rubber mallet may be needed.

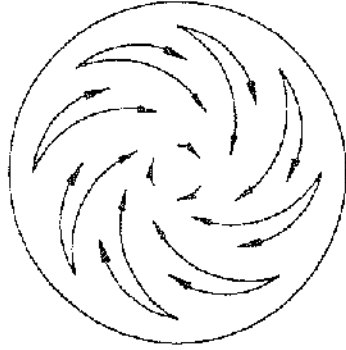
TYPICAL DRY SCREENING PATTERN
 (NOMINAL 50 POUNDS/CU. FT. DENSITY)



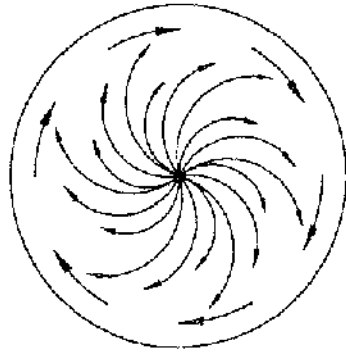
0° LEAD ANGLE
 MATERIAL TRAVELS
 STRAIGHT OUT



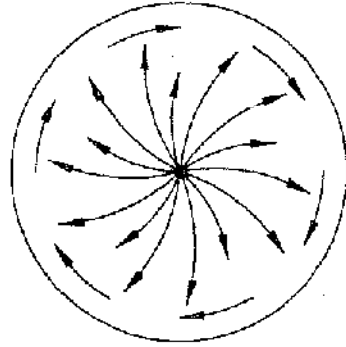
30° LEAD ANGLE
 MATERIAL SPIRAL
 PATTERN PRODUCES
 OPTIMUM SEPERATION



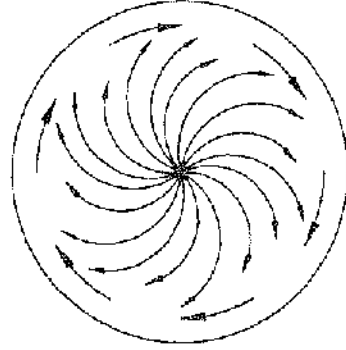
80° LEAD ANGLE
 OVERSIZE MATERIAL
 DOES NOT DISCHARGE



0° LEAD ANGLE
 RAPID MATERIAL
 MOVEMENT REDUCES
 DEWATERING



30° LEAD ANGLE
 SPIRAL PATTERN
 PRODUCES OPTIMUM
 DEWATERING VS.
 PRODUCTION



80° LEAD ANGLE
 MATERIAL SPIRALS VERY
 SLOWLY TOWARDS OUTSIDE

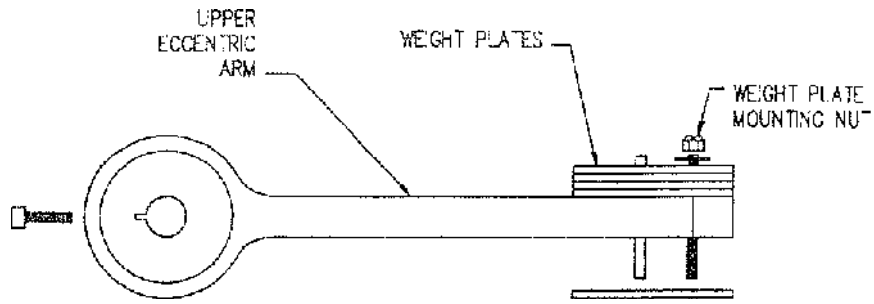
CHANGING THE ANGLE BETWEEN THE UPPER AND LOWER ECCENTRIC ARMS AND THE
 INSTALLED WEIGHTS CAN DRAMATICALLY ALTER THE SCREENING PATTERN AND
 THROUGHPUT RATES. THE ABOVE SHOWS TYPICAL RESULTS THAT ARE HIGHLY
 DESIREABLE TO ACHIEVE OPTIMUM PRODUCTIONS.

DATE	BY	REVISED
9-99	R.M.M.	9-99
DESIGNED	BY	DATE
PROF. ENG.	DATE	PROF. ENG.
DATE	DATE	DATE
PROPP.	S. O.	

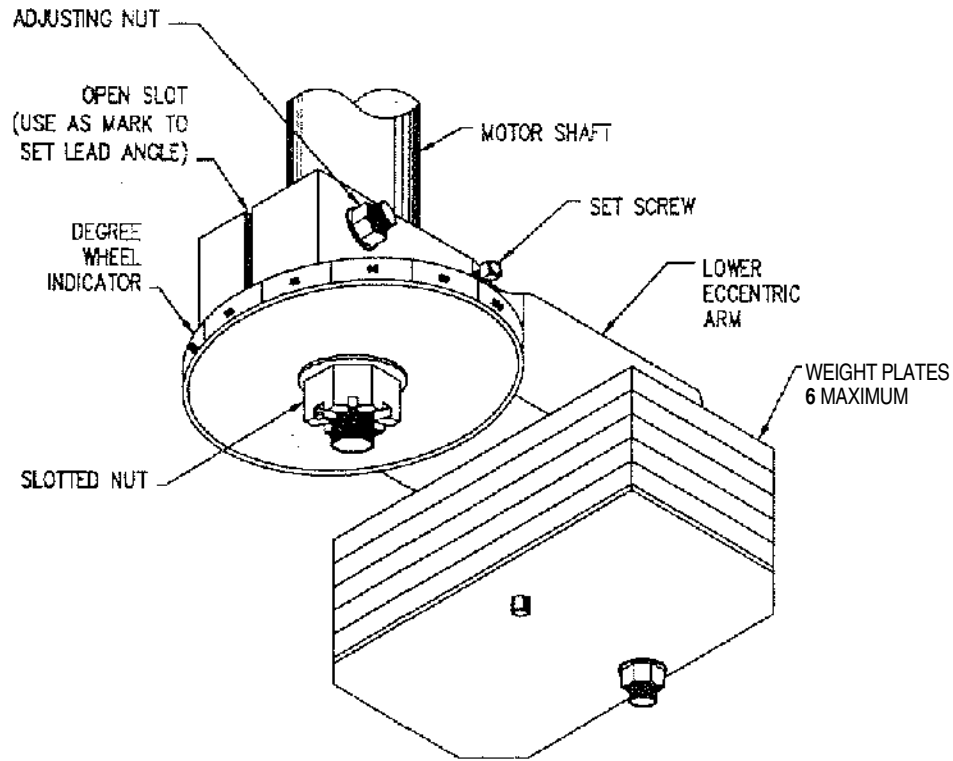
smico

LEAD ANGLE ADJUSTMENTS
 AND RESULTING PATTERNS

SCALE	DWG. NO.	SHEET	REV.
NONE	SKA580	1	1



WEIGHT PLATES
TOP MOTOR WEIGHT ASSEMBLY

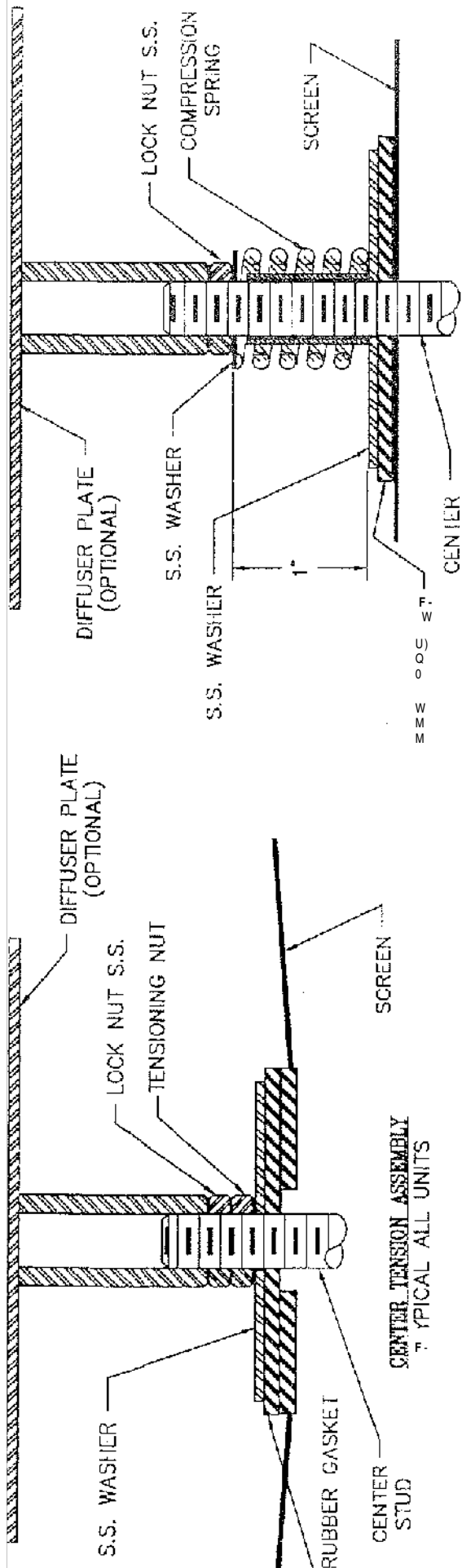


BOTTOM MOTOR WEIGHT ASSEMBLY

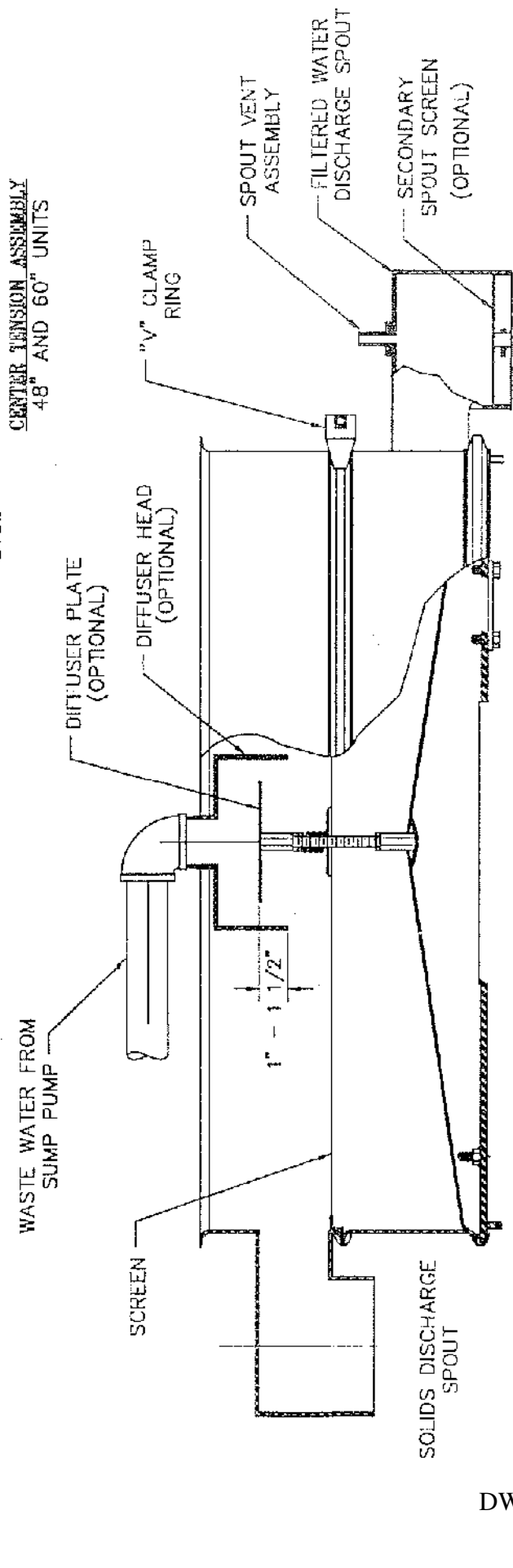
smico

MOTOR WEIGHT
 Installation Assy
 Mod 3

DWG #SKA583



CENTER TENSION ASSEMBLY
48" AND 60" UNITS

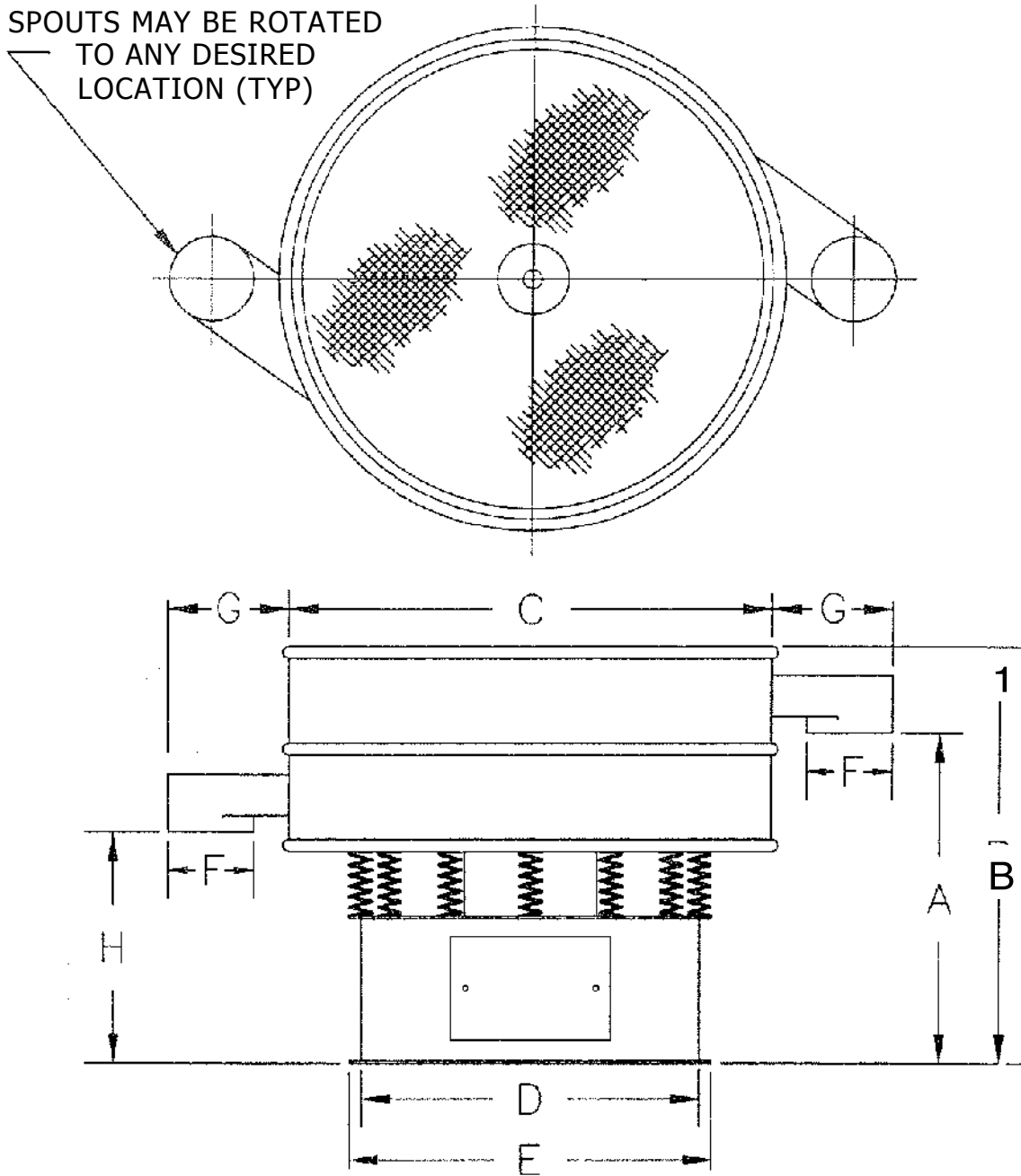


REV	DATE	BY	CHKD
1			
P-83-PD			

smico

REVISIONS FOR AMENDMENTS

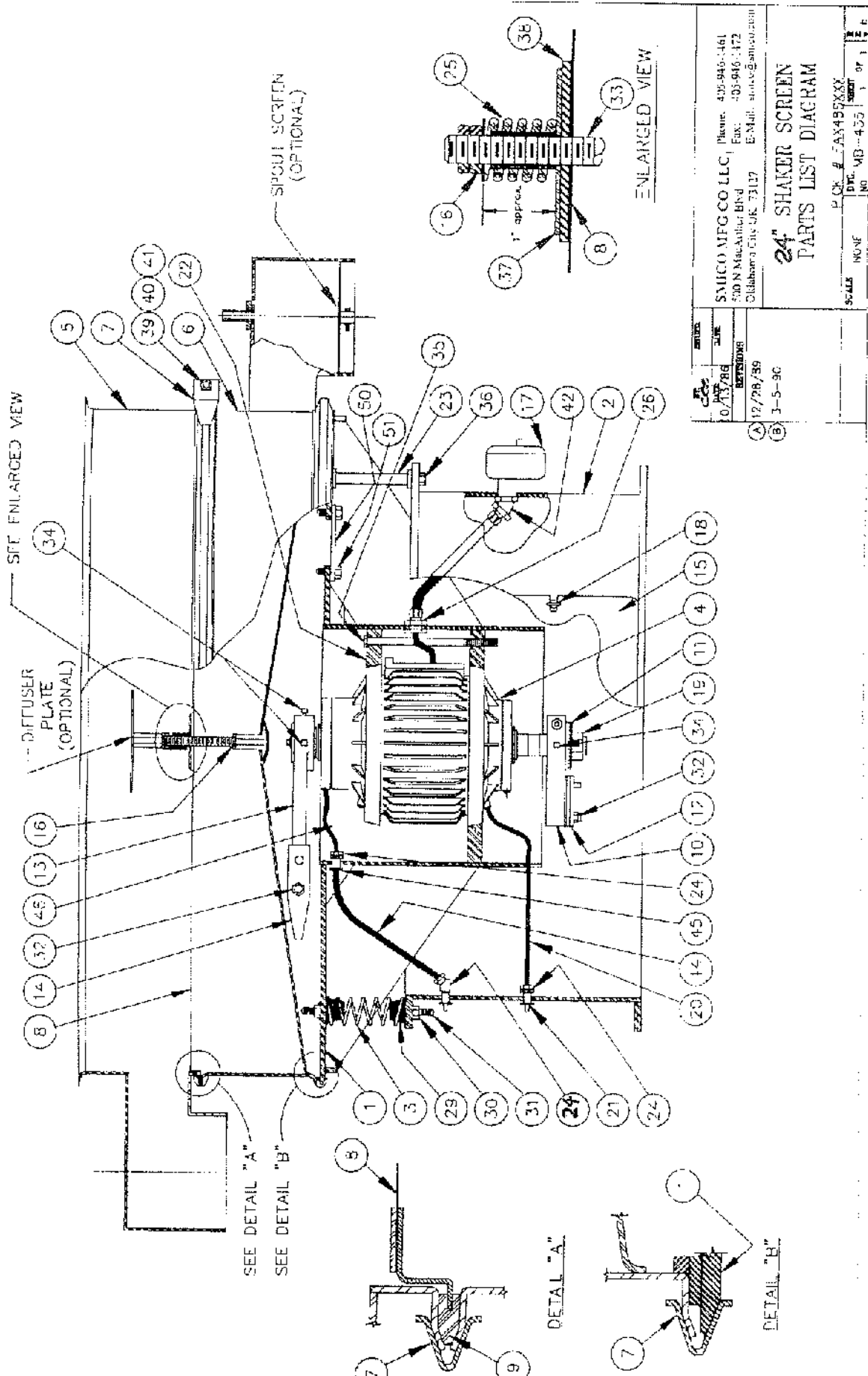
SPOUTS MAY BE ROTATED
TO ANY DESIRED
LOCATION (TYP)



SHAKER SCREEN OUTLINE DIMENSIONS (all dimensions are in Inches) DWG # SK-183, 7/18/86-C.R.E.REV E 6/8/06

MODEL	SCREEN DIA	Max Flow Rate	A	B	C	D	E	F	G	H
24	24 Inch	30 GPM	20 1/2	28	24	17	20 3/4	4	6 1/2	14 3/4
30	30 Inch	60 GMP	20 1/2	28	31 3/4	17	20 3/4	4	7	14 3/4
40	40 Inch	100 GPM	24 1/2	34	39 1/4	26 1/4	30	8	11 1/4	16 3/4
48	48 Inch	175 GPM	28 1/2	38	47 3/8	32 3/4	36 1/2	8	11	20 3/4
60	60 Inch	250 GPM	28 1/2	39	58 3/4	32 3/4	36 1/2	8	10 1/2	20 3/4

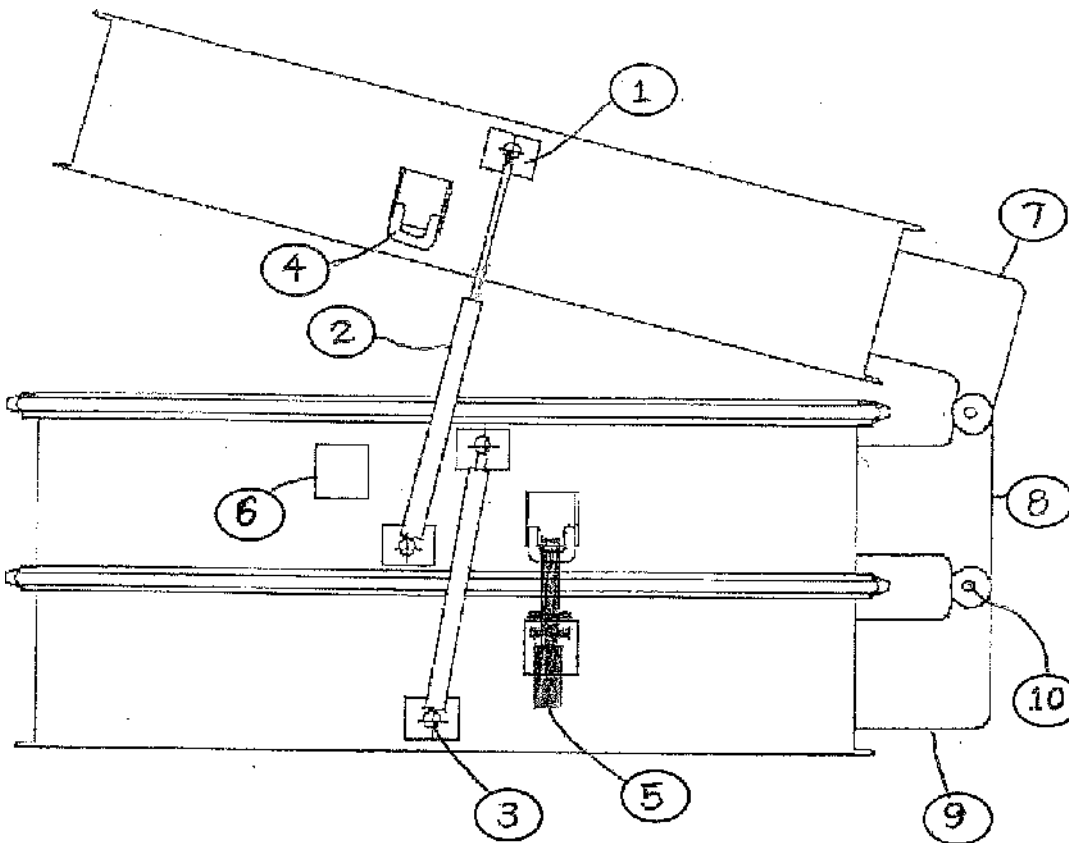
11
17



DATE	10/13/88	BY	BAK/DMB
SCALE	NONE	DRG. NO.	455
SAHCO MFG CO LLC		PHONE	435-946-1461
700 N Main Street Blvd		FAX	435-946-1472
Clarksburg City, W. Va. 26107		E-MAIL	sales@saahco.com
24" SHAKER SCREEN PARTS LIST DIAGRAM			
PKT #	EA5498XXX	REV	1
REV	1	DATE	11/1/88
REV	2	DATE	3-5-90

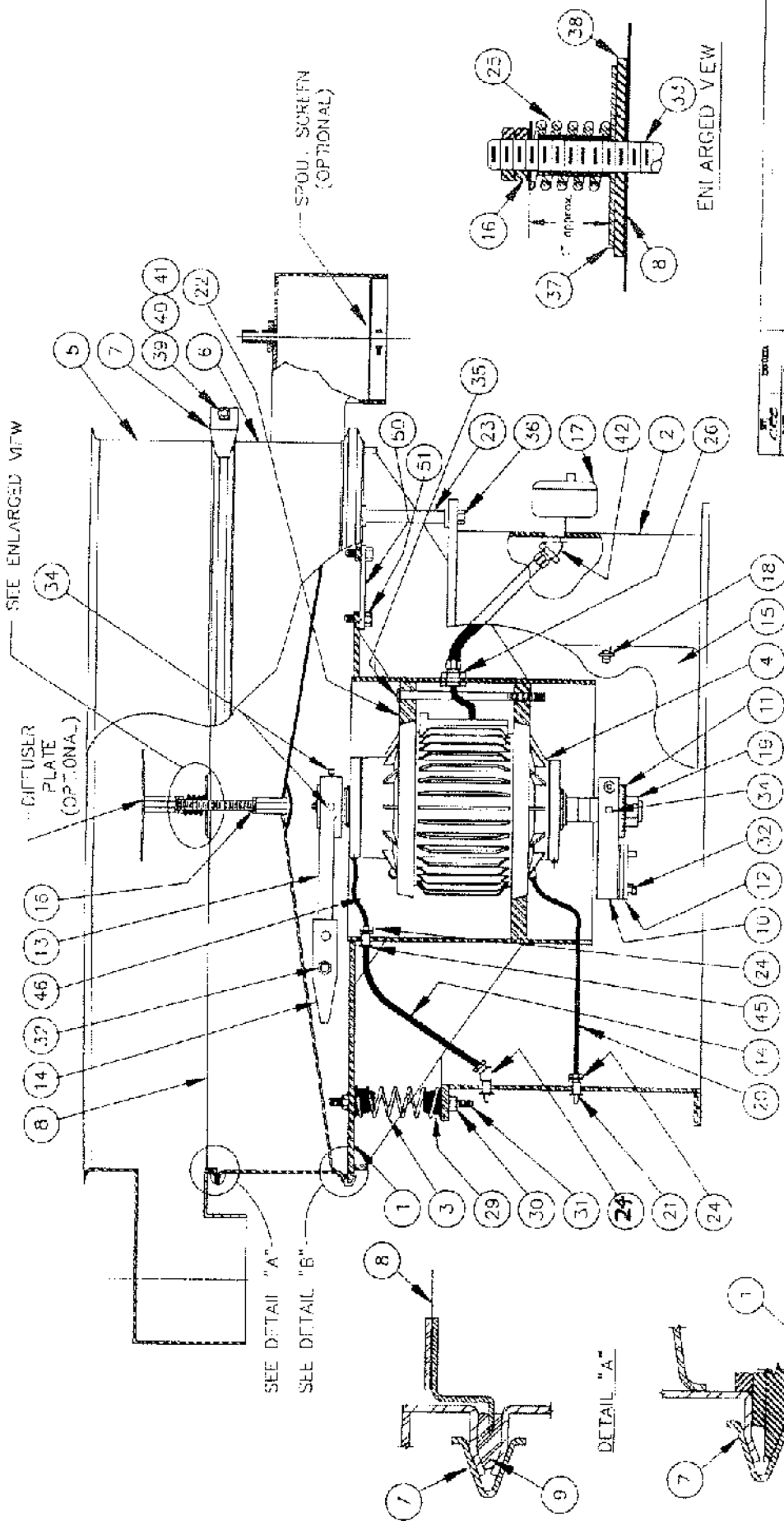
24° CIRCULAR SCREENER - PARTS LIST

ITEM	QTY.	PART NUMBER	PART DESCRIPTION
1	1	650-100-040	TABLE ASSEMBLY
2	1	650-150-040	BASE ASSEMBLY
3	12	650-300-001	SUPPORT SPRING
4	1	650-200-010	MOTOR
5	1	650-300-112	SPACING FRAME
6	1	650-300-130	TABLE FRAME
7	2	650-300-240	CLAMP RING, HALVES
8	1	650-400-040	SCREEN
9	1	650-400-140	SCREEN GASKET
10	1	650-500-001	LOWER ECCENTRIC ARM
11	1	650-500-005	DEGREE INDICATOR
12	6	650-500-010	LOWER ARM WEIGHT
13	1	650-500-003	UPPER ECCENTRIC ARM
14	6	650-500-020	UPPER ARM WEIGHT
15	1	650-500-400	BASE DOOR
16	3	640-510-062	518-11 SS NUT
17	1	405-303-080	JUNCTION BOX
18	2	640-201-037	THUMB SCREW, 3/8-16 X 3/4
19	1	640-590-125	SLOTTED HEX NUT, 1 1/4-7
20	1	125-600-100	LUBRICATION HOSE, 114" X 20 112" LONG
21	2	100-300-100	ZERK, GREASE FITTING
22	3	650-200-001	MOTOR MOUNTING WEDGE
23	6	650-300-010	SHIPPING BRACKETS
24	3	100-200-000	118", 45 DEG., SWIVEL FITTING
25	1	640-700-047	SCREEN TENSIONER SPRING
26	1	405-020-100	STRAIGHT CORD CONNECTOR
29	24	650-300-002	RUBBER BUSHING
30	12	640-060-050	LOCK NUT, 112-13 PLATED
31	12	640-020-050	112-13 X 2 1/4 PLATED, HHCS
32	3	640-040-062	518-11 PLATED NUT
33	1	640-510-063	CENTER STUD, 518-11 X 6 SS
34	3	640-120-037	SQUARE HEADED SET SCREW, 318-16 X 1 112
35	3	640-025-075	314-10 X 8 112 HHCS
36	6	640-020-050	1/2-13 X 8 1/2 HHCS
37	1	640-510-065	WASHER ASSEMBLY
38	1	640-510-067	NEOPRENE GASKET, 4" OD X 112" ID
39	4	640-500-037	318-16 X 7 SS HHCS
40	8	640-040-037	318-16 PLATED HEX NUT
41	4	640-580-065	5/8 SS FLAT WASHER
42	1	405-020-100	45 DEG CORD CONNECTOR
44	1	125-600-075	LUBRICATION HOSE 114" X 12 112" LONG
45	1	125-600-050	1/8-NPT COUPLING
46	2	125-600-005	LUBRICATION HOSE 114" X 5 114" LONG
50	1	650-500-500	UPPER ARM ACCESS COVER
51	4	650-500-501	1/2-13 X 1 112 PLATED HHCS



Quick Screen Change (Clam Shell)

Item No.	Description	Part No:
1.	Factory reinforcing plate for items 2 & 3	None
2.	Gas spring (shock)	640702188675
3.	Mount for gas spring (included w/item 2)	
4.	Latch for Item 5	None
5.	Clamp	640820053511
6.	Reinforcing plate for Item 5	None
7.	Hinge Assembly: Upper (Left side shown)	MB 6130U
8.	Hinge Assembly: Middle (Left side shown)	MB 6130M
9.	Hinge Assembly: Lower (left side shown)	MB 6130L
10.	Hinge Pin	MB 6130HP



REV	DATE	DESCRIPTION
1	10/13/89	REVISIONS
2	12/28/89	
3	3-5-90	

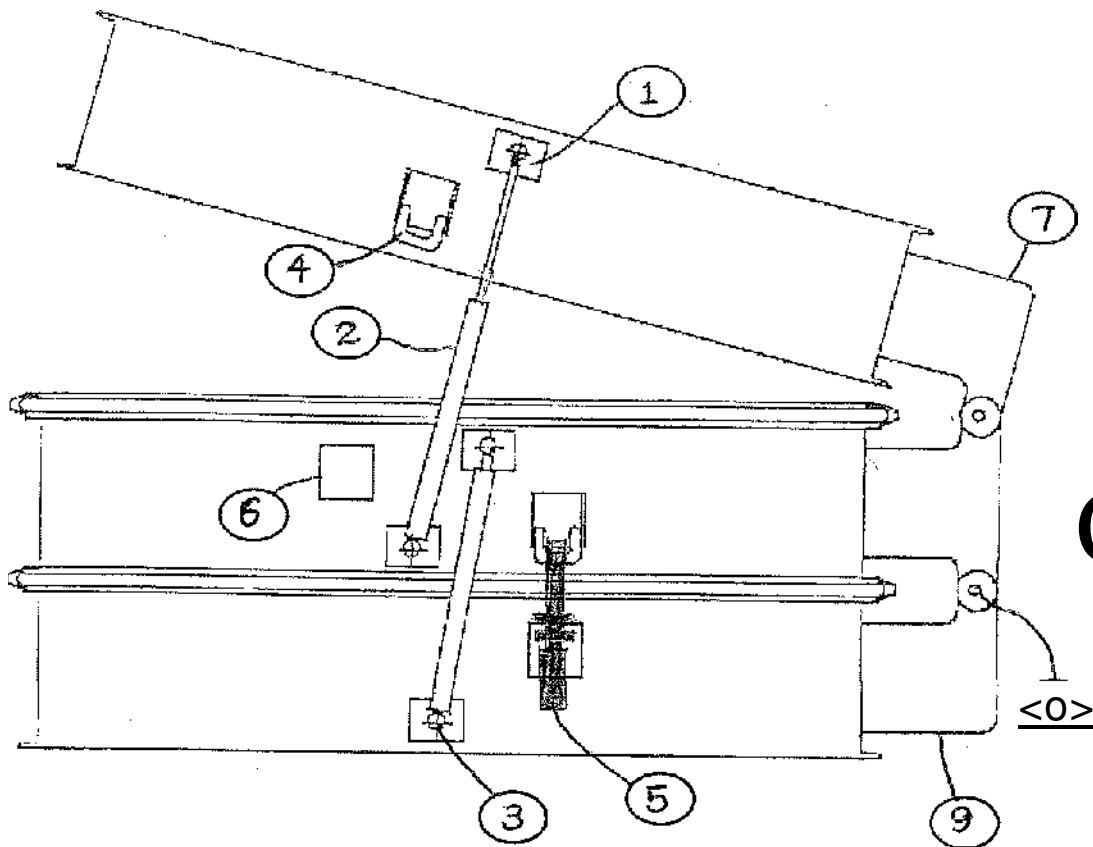
SMICO MFG CO LLC, Phone: 405-946-461
 200 N MacArthur Blvd, Fax: 405-946-172
 Oklahoma City OK 73127, E-Mail: smico@smico.com

30" SHAKER SCREEN PARTS LIST DIAGRAM

SCALE: NGNF
 DWG. NO. MB-4215
 PARTS # FAX: 405-946-172

30' CIRCULAR SCREENER - PARTS LIST

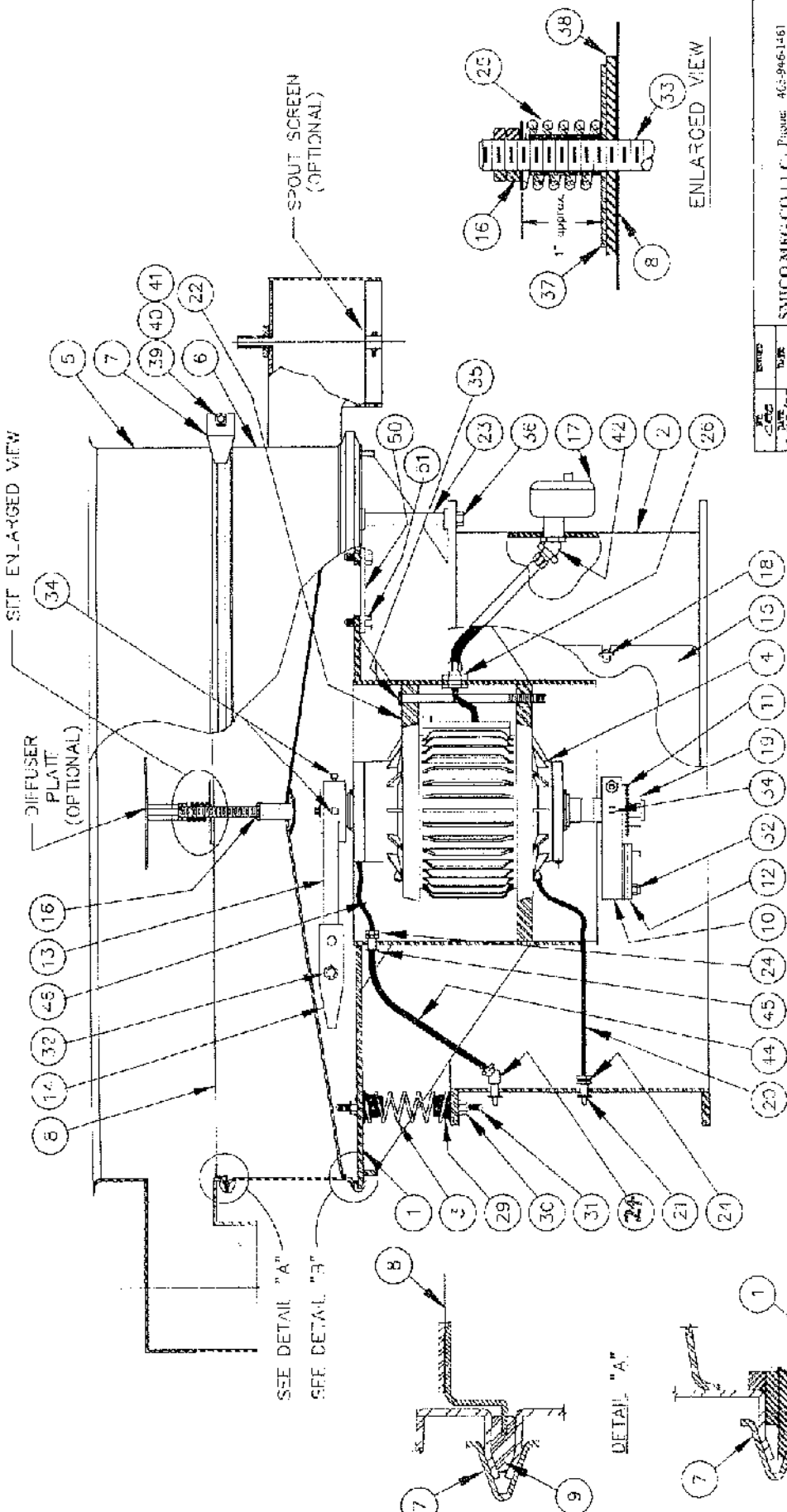
ITEM	QTY	PART NUMBER	PART DESCRIPTION
1	1	650-100-040	TABLE ASSEMBLY
2	1	650-150-040	BASE ASSEMBLY
3	12	650-300-001	SUPPORT SPRING
4	1	650-200-010	MOTOR
5	1	650-300-112	SPACING FRAME
6	1	650-300-130	TABLE FRAME
7	2	650-300-240	CLAMP RING, HALVES
8	1	650-400-040	SCREEN
9	1	650-400-140	SCREEN GASKET
10	1	650-500-001	LOWER ECCENTRIC ARM
11	1	650-500-005	DEGREE INDICATOR
12	6	650-500-010	LOWER ARM WEIGHT
13	1	650-500-003	UPPER ECCENTRIC ARM
14	6	650-500-020	UPPER ARM WEIGHT
15	1	650-500-400	BASE DOOR
16	3	640-510-062	5/8-11 SS NUT
17	1	405-303-080	JUNCTION BOX
18	2	640-201-037	THUMB SCREW, 318-16 X 314
19	1	640-590-125	SLOTTED HEX NUT, 1 114-7
20	1	125-600-100	LUBRICATION HOSE, 114" X 20 112" LONG
21	2	100-300-100	ZERK, GREASE FITTING
22	3	650-200-001	MOTOR MOUNTING WEDGE
23	6	650-300-010	SHIPPING BRACKETS
24	3	100-200-000	118", 45 DEG., SWIVEL FITTING
25	1	640-700-047	SCREEN TENSIONER SPRING
26	1	405-020-100	STRAIGHT CORD CONNECTOR
29	24	650-300-002	RUBBER BUSHING
30	12	640-060-050	LOCK NUT, 112-13 PLATED
31	12	640-020-050	112-13 X 2 114 PLATED, HHCS
32	3	640-040-062	518-11 PLATED NUT
33	1	640-510-063	CENTER STUD, 518-11 X 6 SS
34	3	640-120-037	SQUARE HEADED SET SCREW, 318-16 X 1 112
35	3	640-025-075	314-10 X 8 112 HHCS
36	6	640-020-050	112-13 X 8 112 HHCS
37	1	640-510-065	WASHER ASSEMBLY
38	1	640-510-067	NEOPRENE GASKET, 4" OD X 112" ID
39	4	640-500-037	318-16 X 7 SS HHCS
40	8	640-040-037	318-16 PLATED HEX NUT
41	4	640-580-065	518 SS FLAT WASHER
42	1	405-020-100	45 DEG CORD CONNECTOR
44	1	125-600-075	LUBRICATION HOSE 114" X 12 112" LONG
45	1	125-600-050	1/8-NPT COUPLING
46	2	125-600-005	LUBRICATION HOSE 114" X 5 114" LONG
50	1	650-500-500	UPPER ARM ACCESS COVER
51	4	650-500-501	112-13 X 1 112 PLATED HHCS



Quick Screen

Change (Clam Shell)

Item No.	Description	Part No:
1.	Factory reinforcing plate for items 2 & 3	None
2.	Gas spring (shock)	640702188675
3.	Mount for gas spring (included w/item 2)	
4.	Latch for Item 5	None
5.	Clamp	640820053511
6.	Reinforcing plate for Item 5	None
7.	Hinge Assembly: Upper (Left side shown)	MB 6130U
8.	Hinge Assembly: Middle (Left side shown)	MB 6130M
9.	Hinge Assembly: Lower (left side shown)	MB 6130L
10.	Hinge Pin	MI3 6130HP



SEE ENLARGED VIEW

DIFFUSER PLATE (OPTIONAL)

SEE DETAIL "A"
SEE DETAIL "B"

DETAIL "A"

DETAIL "B"

ENLARGED VIEW

REVISED	DATE	BY	CHKD	DATE	BY
0/13/98					
REVISIONS					
A 12/29/98					
E 3-5-98					

SMICO MFG CO I.L.C. | Phone: 405-946-1461
 300 N. McAArthur Blvd | FAX: 405-946-1471
 Oklahoma City OK 73137 | E-Mail: smico@smico.com

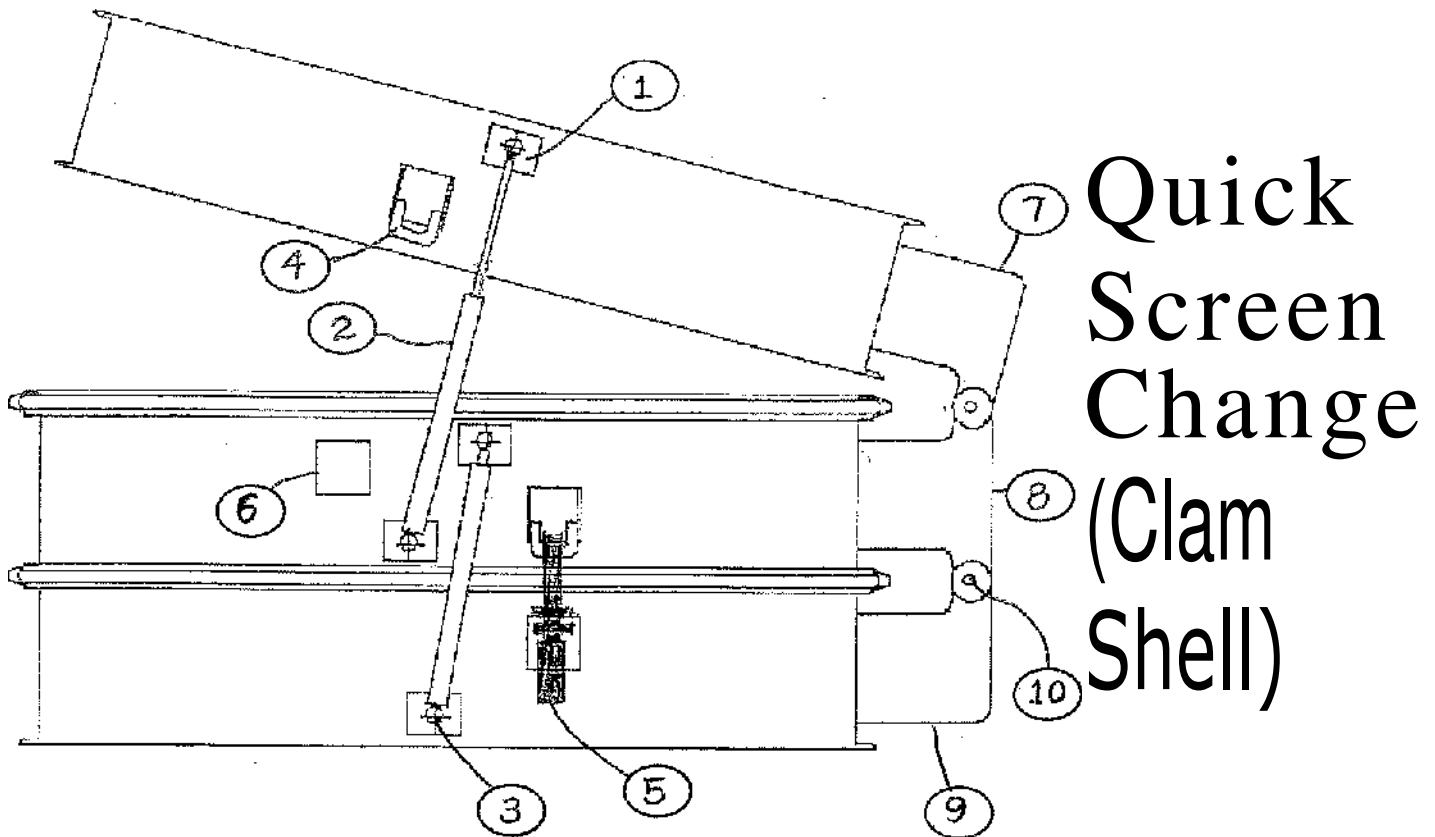
40" SHAKER SCREEN
PARTS LIST DIAGRAM

SCALE	NONE	PIECES	NO.	REQ.	OF	TOTAL
			435	1	1	6

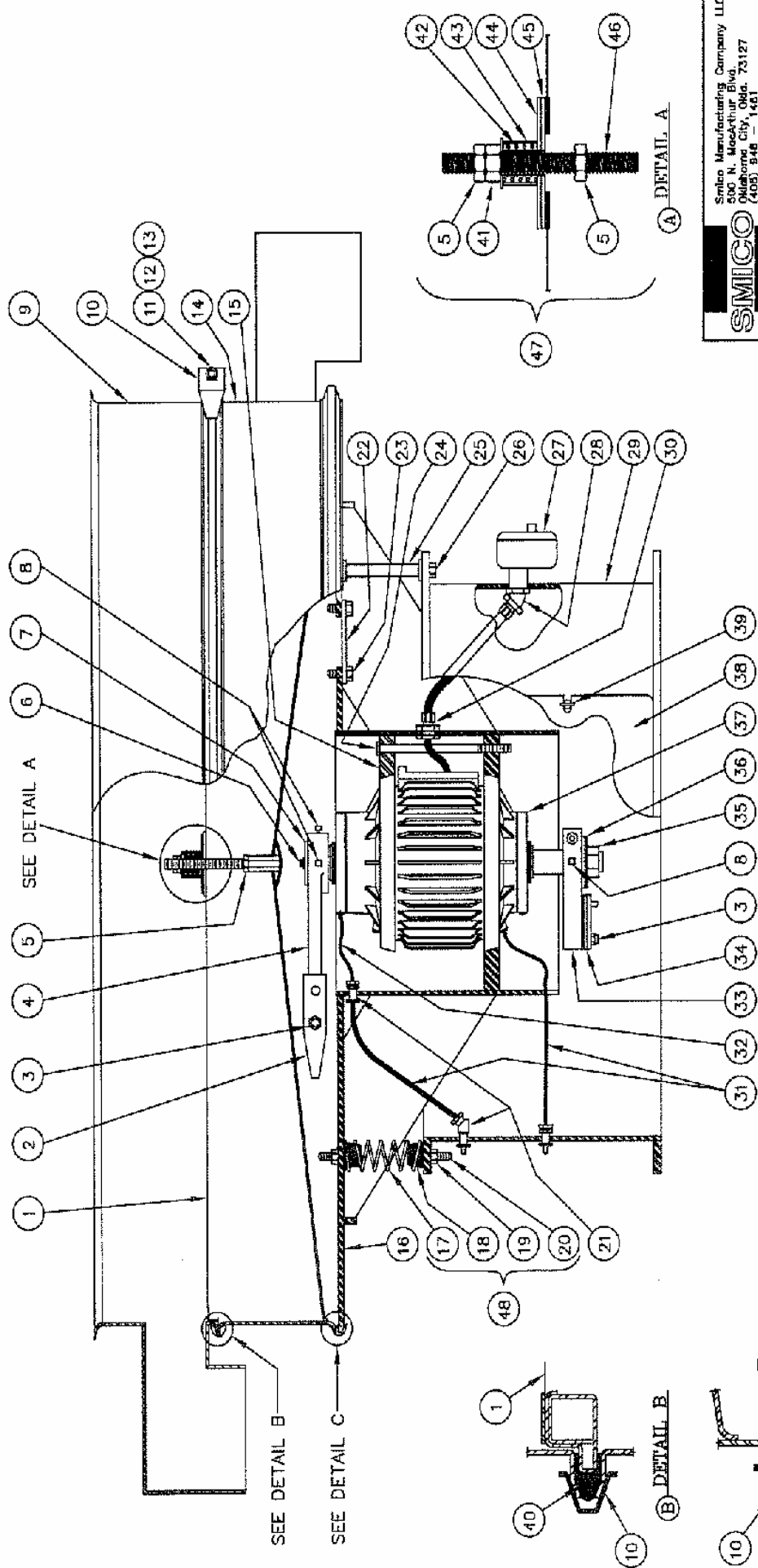
40

40" CIRCULAR SCREENER - PARTS LIST

ITEM	QTY.	PART NUMBER	PART DESCRIPTION
1	1	650-100-040	TABLE ASSEMBLY
2	1	650-150-040	BASE ASSEMBLY
3	12	650-300-001	SUPPORT SPRING
4	1	650-200-010	MOTOR
5	1	650-300-112	SPACING FRAME
6	1	650-300-130	TABLE FRAME
7	2	650-300-240	CLAMP RING, HALVES
8	1	650-400-040	SCREEN
9	1	650-400-140	SCREEN GASKET
10	1	650-500-001	LOWER ECCENTRIC ARM
11	1	650-500-005	DEGREE INDICATOR
12	6	650-500-010	LOWER ARM WEIGHT
13	1	650-500-003	UPPER ECCENTRIC ARM
14	6	650-500-020	UPPER ARM WEIGHT
15	1	650-500-400	BASE DOOR
16	3	640-510-062	5/8-11 SS NUT
17	1	405-303-080	JUNCTION BOX
18	2	640-201-037	THUMB SCREW, 3/8-16 X 3/4
19	1	640-590-125	SLOTTED HEX NUT, 1 1/4-7
20	1	125-600-100	LUBRICATION HOSE, 114" X 20 1/2" LONG
21	2	100-300-100	ZERK, GREASE FITTING
22	3	650-200-001	MOTOR MOUNTING WEDGE
23	6	650-300-010	SHIPPING BRACKETS
24	3	100-200-000	118", 45 DEG., SWIVEL FITTING
25	1	640-700-047	SCREEN TENSIONER SPRING
26	1	405-020-100	STRAIGHT CORD CONNECTOR
29	24	650-300-002	RUBBER BUSHING
30	12	640-060-050	LOCK NUT, 1/2-13 PLATED
31	12	640-020-050	112-13 X 2 1/4 PLATED, HHCS
32	3	640-040-062	518-11 PLATED NUT
33	1	640-510-063	CENTER STUD, 518-11 X 6 SS
34	3	640-120-037	SQUARE HEADED SET SCREW, 318-16 X 1 1/2
35	3	640-025-075	3/4-10 X 8 1/2 HHCS
36	6	640-020-050	112-13 X 8 1/2 HHCS
37	1	640-510-065	WASHER ASSEMBLY
38	1	640-510-067	NEOPRENE GASKET, 4" OD X 112" ID
39	4	640-500-037	3/8-16 X 7 SS HHCS
40	8	640-040-037	3/8-16 PLATED HEX NUT
41	4	640-580-065	5/8 SS FLAT WASHER
42	1	405-020-100	45 DEG CORD CONNECTOR
44	1	125-600-075	LUBRICATION HOSE 114" X 12 1/2" LONG
45	1	125-600-050	1/8-NPT COUPLING
46	2	125-600-005	LUBRICATION HOSE 114" X 5 1/4" LONG
50	1	650-500-500	UPPER ARM ACCESS COVER
51	4	650-500-501	112-13 X 1 1/2 PLATED HHCS



Item No.	Description	Part No:
1.	Factory reinforcing plate for items 2 & 3	None
2.	Gas spring (shock)	640702188675
3.	Mount for gas spring (included w/ item 2)	None
4.	Latch for Item 5	None
5.	Clamp	640820053511
6.	Reinforcing plate for Item 5	None
7.	Hinge Assembly: Upper (Left side shown)	MS 6130U
8.	Hinge Assembly: Middle (Left side shown)	M~ 6130M
9.	Hinge Assembly: Lower (left side shown)	MB 6130L
10.	Hinge Pin	MB 6130HP



SMICO
 Smico Manufacturing Company LLC
 500 N. MacArthur Blvd.
 Oklahoma City, Okla. 73127
 (405) 848-1481

**48" CIRCULAR SCREEN
 PARTS DIAGRAM**

SCALE	NONE	DWG. NO.	SMA-1313	SHEET	OF 1
-------	------	----------	----------	-------	------

OPTIONAL (CLEAN RING TENSIONING ASSEMBLY)

FOR DWG SKA 224

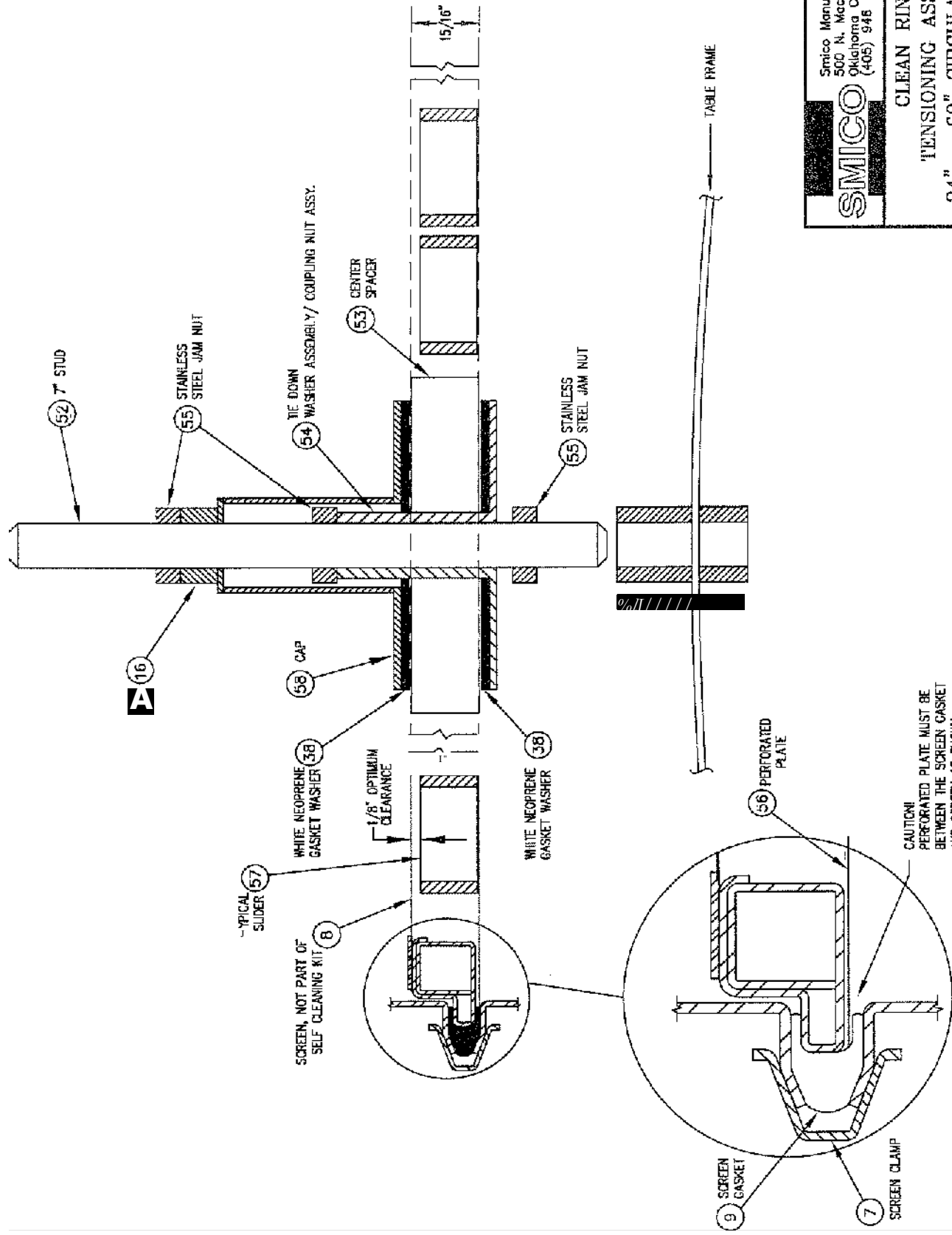
ITEM	Qty	PART NUMBER	PART DESCRIPTION
7	1	650-300-240	CLAMP RING ASSEMBLY
8	1	650-400-040	SCREEN
9	1	650-400-140	SCREEN GASKET
16	1	640-510-062	518-11 SS NUT
38	2	640-510-067	NEOPRENE GASKET
52	1	640-510-200	CENTER STUD, 518-11 X7 SS
53	1	650-600-225	CENTER SPACER
54	1	650-700-200	TIE DOWN WASHER ASSY COUPLING NUT ASSY
55	3	640-625-011	JAM NUT 5/8-11
56	1	650-400-049	PERF PLATE
57	175	640-300-028	SLIDERS (APPROX QUANTITY FOR 48")
58	1	640-300-045	REVERSE TENSION ASSEMBLY

48 CIRCULAR SCREENER - PARTS UST

DWG # SKA-1313

ITEM	QTY.	PART NUMBER	PART DESCRIPTION
1	1	650-400-040	SCREEN
2	6	650-500-020	UPPER ARM WEIGHT
3	3	640-040-062	5/8-11 PLATED NUT
4	1	650-500-003	UPPER ECCENTRIC ARM
5	2	640-625-011	518-11 SS JAM NUT
6	1	640-020-125	112-13 X 1 114" PLATED HHCS
7	1	640-600-350	ECCENTRIC ARM RETAINING WASHER
8	3	64.0-120-037	SQUARE HEADED SET SCREW, 318-16 X 1 112
9	1	650-300-112	SPACING FRAME
10	2	650-300-240	CLAMP RING, HALVES
11	4	640-500-037	3/8-16 X 7 112" SS HHCS
12	8	640-040-037	318-16 PLATED HEX NUT
13	4	640-580-065	518 SS FLAT WASHER
14	1	650-300-130	TABLE FRAME
15	3	650-200-001	MOTOR MOUNTING WEDGE
16	1	650-100-040	TABLE ASSEMBLY
17	12	650-300-001	SUPPORT SPRING
18	24	650-300-002	RUBBER BUSHING
19	12	640-060-050	LOCK NUT, 112-13 PLATED
20	12	640-020-225	112-13 X 2 112" PLATED, HHCS
21	2	100-300-100	ZERK, GREASE FITTING
21	3	100-200-000	118", 45 DEG., SWIVEL FITTING
22	1	650-500-500	UPPER ARM ACCESS COVER
23	2	640-020-075	114-20 X 314" PLATED HHCS
24	3	640-025-075	3/4-10 X 8 112 HHCS
25	6	650-300-010	SHIPPING BRACKETS
26	6	640-020-850	112-13 X 8 112 HHCS
27	1	405-303-080	JUNCTION BOX
28	1	405-020-100	45 DEG CORD CONNECTOR
29	1	650-150-040	BASE ASSEMBLY
30	1	405-020-100	STRAIGHT CORD CONNECTOR
31	1	125-600-100	LUBRICATION HOSE, 114" X 20 112" LONG
32	1	125-600-090	LUBRICATION HOSE 118" X 9" LONG
33	1	650-500-001	LOWER ECCENTRIC ARM
34	6	650-500-010	LOWER ARM WEIGHT
35	1	640-590-125	SLOTTED HEX NUT, 1 1/4-7
36	1	650-500-005	DEGREE INDICATOR
37	1	650-200-010	MOTOR
38	1	650-500-400	BASE DOOR
39	2	640-201-037	THUMB SCREW, 318-16 X 314
40	1	650-400-140	SCREEN GASKET
41	3	640-510-062	518-11 SS NUT

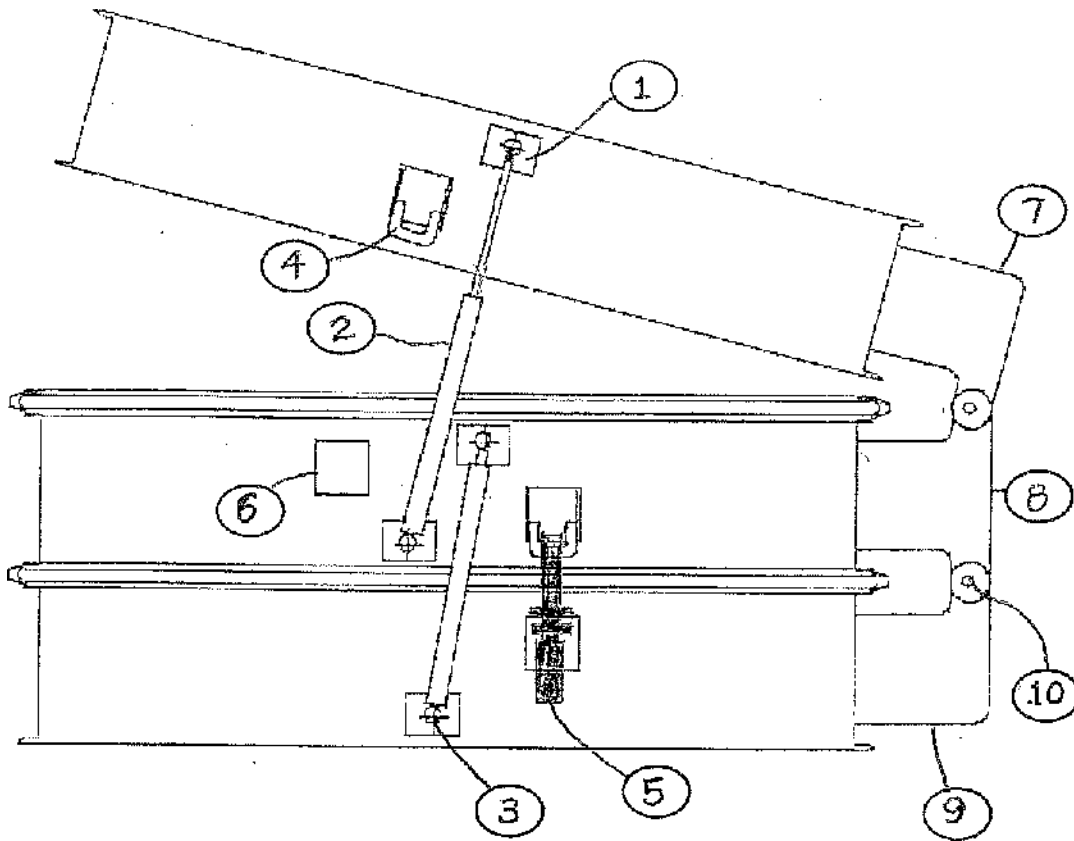
42	1	640-700-047	SCREEN TENSIONER SPRING
43	1	640-300-045	SPRING SHIELD ASSEMBLY
44			
45	2	640-510-067	NEOPRENE GASKET, 4" OD X 112" ID
45	1	125-600-050	118-NPT COUPLING
46	2	125-600-005	LUBRICATION HOSE 114" X 5 114" LONG
46	1	640-510-063	CENTER STUD, 518-11 X 6 SS
47	1	640-700-000	TENSIONING ASSEMBLY, CONSTANT
48	12	650-300-000	SUPPORT SPRING ASSEMBLY



SMICO
Smico Manufacturing Company LLC
500 N. McCArthur Blvd.
Oklahoma City, Okla. 73127
(405) 948-1461

CLEAN RING
TENSIONING ASSEMBLY
24" - 60" CIRCULAR SCREENS

SCALE	DWG. NO.	SHEET OF	B
NONE	SKA224	1	1
			B

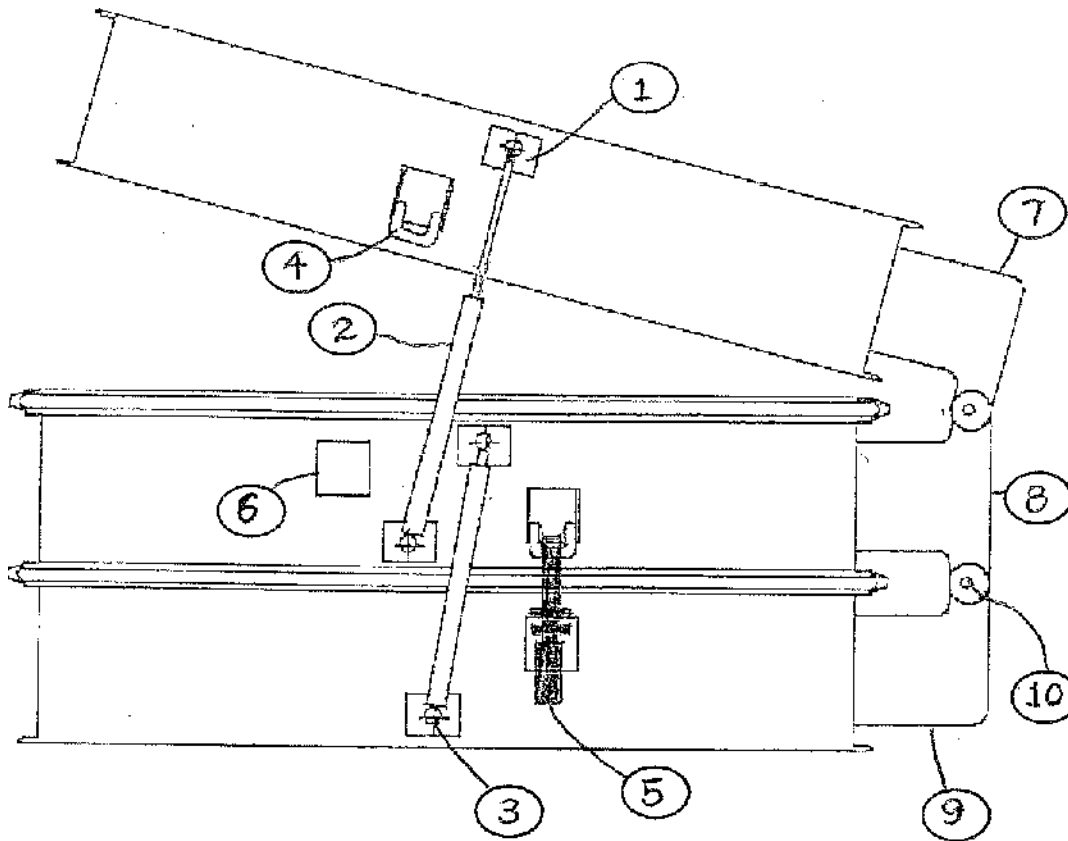


Quick Screen Change (Clam Shell)

Item No.	Description	Part No.
1.	Factory reinforcing plate for items 2 & 3	None
2.	Gas spring (shock)	640702188675
3.	Mount for gas spring (included w/ item 2)	
4.	Latch for Item 5	None
5.	Clamp	640820053511
6.	Reinforcing plate for Item 5	None
7.	Hinge Assembly: Upper (Left side shown)	MB6130U
8.	Hinge Assembly: Middle (Left side shown)	MB 6130M
9.	Hinge Assembly: Lower (left side shown)	MB 6130L
10.	Hinge Pin	MB 6130HP

60" CIRCULAR SCREENER - PARTS LIST

ITEM	QTY.	PART NUMBER	PART DESCRIPTION
1	1	650-100-040	TABLE ASSEMBLY
2	1	650-150-040	BASE ASSEMBLY
3	12	650-300-001	SUPPORT SPRING
4	1	650-200-010	MOTOR
5	1	650-300-112	SPACING FRAME
6	1	650-300-130	TABLE FRAME
7	2	650-300-240	CLAMP RING, HALVES
8	1	650-400-040	SCREEN
9	1	650-400-140	SCREEN GASKET
10	1	650-500-001	LOWER ECCENTRIC ARM
11	1	650-500-005	DEGREE INDICATOR
12	6	650-500-010	LOWER ARM WEIGHT
13	1	650-500-003	UPPER ECCENTRIC ARM
14	6	650-500-020	UPPER ARM WEIGHT
15	1	650-500-400	BASE DOOR
16	3	640-510-062	518-11 SS NUT
17	1	405-303-080	JUNCTION BOX
18	2	640-201-037	THUMB SCREW, 3/8-16 X 3/4
19	1	640-590-125	SLOTTED HEX NUT, 1 1/4-7
20	1	125-600-100	LUBRICATION HOSE, 1/4" X 20 1/2" LONG
21	2	100-300-100	ZERK, GREASE FITTING
22	3	650-200-001	MOTOR MOUNTING WEDGE
23	6	650-300-010	SHIPPING BRACKETS
24	3	100-200-000	1/8", 45 DEG., SWIVEL FITTING
25	1	640-700-047	SCREEN TENSIONER SPRING
26	1	405-020-100	STRAIGHT CORD CONNECTOR
29	24	650-300-002	RUBBER BUSHING
30	12	640-060-050	LOCK NUT, 1/2-13 PLATED
31	12	640-020-050	1/2-13 X 2 1/4 PLATED, HHCS
32	3	640-040-062	5/8-11 PLATED NUT
33	1	640-510-063	CENTER STUD, 518-11 X 6 SS
34	3	640-120-037	SQUARE HEADED SET SCREW, 3/8-16 X 1 1/2
35	3	640-025-075	314-10 X 8 112 HHCS
36	6	640-020-050	112-13 X 8 112 HHCS
37	1	640-510-065	WASHER ASSEMBLY
38	1	640-510-067	NEOPRENE GASKET, 4" OD X 112" ID
39	4	640-500-037	3/8-16 X 7 SS HHCS
40	8	640-040-037	3/8-16 PLATED HEX NUT
41	4	640-580-065	518 SS FLAT WASHER
42	1	405-020-100	45 DEG CORD CONNECTOR
44	1	125-600-075	LUBRICATION HOSE 1/4" X 12 1/2" LONG
45	1	125-600-050	1/8-NPT COUPLING
46	2	125-600-005	LUBRICATION HOSE 1/4" X 5 1/4" LONG
50	1	650-500-500	UPPER ARM ACCESS COVER
51	4	650-500-501	112-13 X 1 1/2 PLATED HHCS



Quick Screen Change (Clam Shell)

Item No.	Description	Part Num.
1.	Factory reinforcing plate for items 2 & 3	None
2.	Gas spring (shock)	640702188675
3.	Mount for gas spring (included w/item 2)	
4.	Latch for Item 5	None
5.	Clamp	640820053511
6.	Reinforcing plate for Item 5	None
7.	Hinge Assembly: Upper (Left side shown)	MB 6130U
8.	Hinge Assembly: Middle (Left side shown)	MB 6130M
9.	Hinge Assembly: Lower (left side shown)	M~ 6130L
10.	Hinge Pin	MS 6130 HP